

# Wear parts and tools in carbide and steel

■ Do you work with processes involving high impact or intense wear on your parts or tools ?

The evatec-tools group brings you the right solutions, from rough blanks to high gloss polishing, we manufacture all types of tools in carbide or special steels.

- Tungsten carbide blank, rough or ground
- Wear part requiring high hardness and high precision
- Cold or semi-hot striking die
- Steel/hardened carbide assembly
- Extrusion, cutting and forming tools
- Hallmark of shape
- Spinning and sizing die
- Die for cartridge and ammunition
- Bouterolle
- Branch
- Cutting and scraping ring
- Pebble



■ Our guarantee of quality and traceability : complete control of the process

evatec-tools carries out the selection and development of the carbide grades in-house. We have mastered the complete manufacturing chain of carbide grades since 1947 and have completed our technical expertise with state-of-the-art production means: mixing, grinding, granulation, pressing, shaping and HIP sintering, which guarantees the absence of any porosity.

Whether you are looking for high hardness, high toughness, high density or corrosion resistance, evatec-tools carbide grades will provide you with an optimal and reliable solution.

■ Our expertise at your service

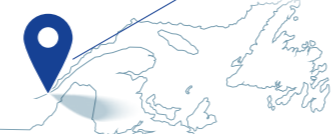
The key words in our relationship are technicality, quality, availability and reactivity.

Highly qualified technicians and a powerful and constantly evolving machine park allow us to reach high levels of precision for your most demanding applications.

In addition, our advanced control methods guarantee the reliability and repeatability of our products.



evatec-canada



evatec

evamet  
create outillage

gmo

■ evatec-tools® is...

Four production units, all based in France, complementary and each with their own speciality, and a commercial subsidiary in Quebec.

**evamet** in Le Creusot (71) :  
Development of carbide grades for tools, cutting inserts and wear parts, grinding and resharpening of carbide, ceramic and CBN inserts.

**create outillage** in Vaulx en Velin (69) :  
Wear parts, tools, dies and punches in carbide and steel for cold forming, extrusion, stamping, cutting and deformation..

**gmo** in Montbrison (42) :  
A design office and a workshop specialized in the development and manufacture of machining solutions, tool bodies and attachments

**evatec** in Thionville (57) :  
Monobloc rotary tools in carbide and high speed steel, cutting tools in CBN, PCD and ceramic.

■ Quality

- Iso 9001 certification
- Lean Manufacturing
- Efficient control means :
  - Dimensional control system by video imaging
  - 3D Scanner for radius and edge control
  - Single and double touch probe
  - Rugosimeter
  - Three-dimensional control machine
  - Bench for measuring and adjusting tools

■ Solutions for the industry :

- Aéronautics
- Agribusiness
- Aluminum Smelter
- Automotive
- Defense
- Metal packaging
- Energy
- Railroad
- Forge
- Medical
- Mechanics
- General mechanics
- Heavy mechanics
- Toolmaker
- Steel industry



Your applications, our customized solutions

**Carbide and Steel Tool designer and Manufacturer**  
**Cutting, Wear Parts and Tools**



evatec-tools.com

evatec-tools.com

# Cutting Tools

evatec-tools manufactures, in small and large series, cutting tool solutions based on your requirements, whether they are standard or specific.

Design and methods offices use the group's know-how to design and develop with you the cutting tools that will meet your needs.

### Applications :

- Turning
- Milling
- Drilling
- Bore
- Lamination
- Drilling
- Core drilling
- Jointing
- Treading and tapping

### Machined materials :

- Aluminium
- Steel
- Cast iron
- Stainless steel
- Superalloys
- Titanium
- Hard materials
- Carbon
- Graphite
- Composite
- Honeycomb

## Monobloc Rotating Hss Tools and Carbide

### Productivity :

Achieving performance in machining is based on essential factors: cutting geometry, tool material and coating.

Our total mastery of the production line, combined with our 5-axis CNC grinding machines, allows us to offer an innovative range of tools that bring substantial gains to machinists :

- One piece milling cutters
- Standards and special drills
- Stepped tools
- Taps
- Routers and cutters for composites and honeycomb

## Tungsten Carbide Cutting Inserts

As a French carbide manufacturer, evatec-tools offers you 80 high-performance carbide grades to meet your machining applications and bring you gains in cutting conditions and tool life.

Uncoated or coated grades (PVD and CVD), our technicians will guide you towards the optimum choice according to your needs and the constraints of your machining: high resistance to wear, high resilience, high temperature resistance or limitation of bonding.

From 4 to 63 mm inscribed circle, standard or special, evatec-tools will offer you the insert adapted to your machining: turning, milling, drilling, core drilling, ...

## Ceramic, PCD and CBN tools

### Ceramic :

For machining cast iron, hardened steels and superalloys, evatec-tools offers ceramic inserts in various grades and edge preparations required for your machining operation.

### PCD and CBN :

#### Even more demanding machining operations ?

Superalloys, large series, abrasive or hard materials, going for high performance tools in PCD and CBN offers you many advantages :

Precision work, repeatability, resistance to wear, abrasion and high temperatures.

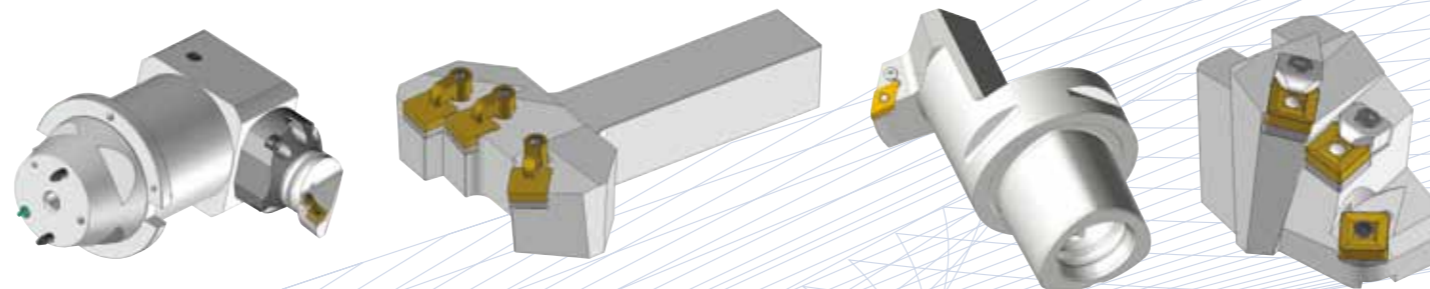
Our PCD and CBN tools and inserts (monobloc, full face or brazed insert) will meet your most extreme challenges.

# Tool holders and attachments

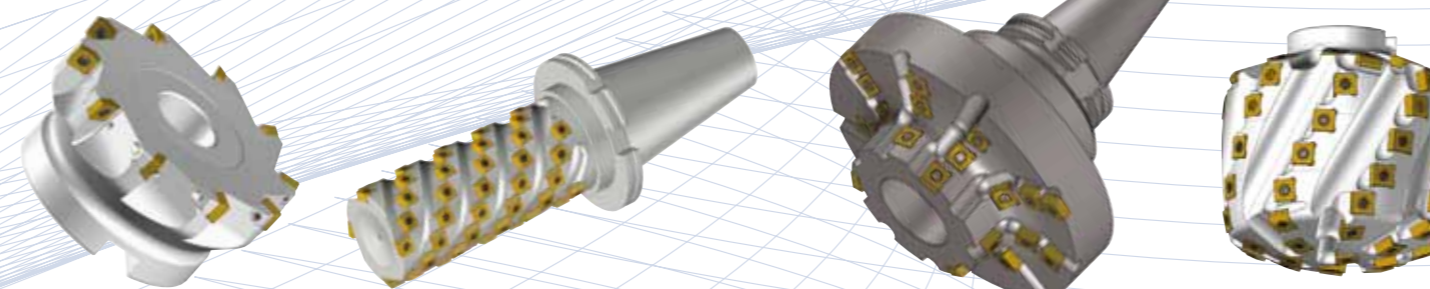
### A specific request? A problem to submit to us ?

Thanks to the combination of an integrated design office and an efficient and continuously renewed machine park, evatec-tools designs and manufactures from your requests high quality tool holders and attachment systems for standard to more complex applications.

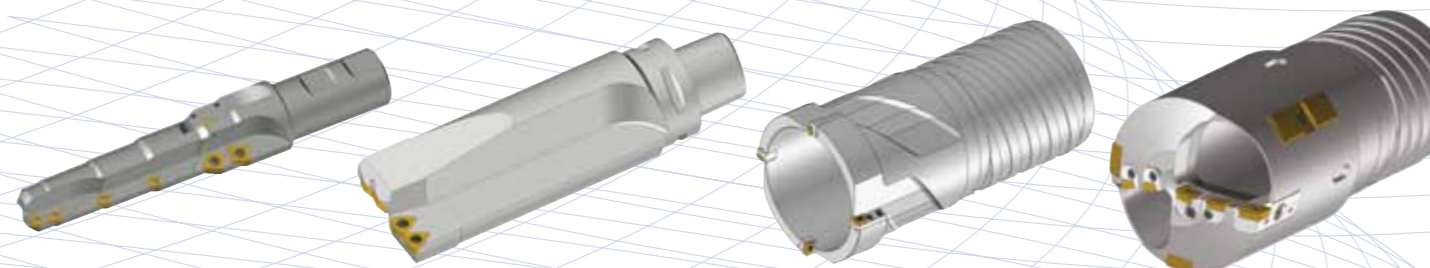
### Standard and special turning tool holders :



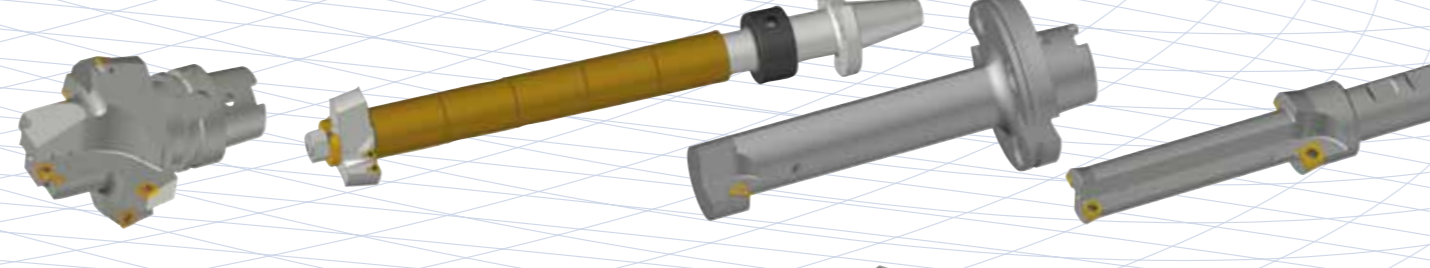
### Standard and special milling cutters :



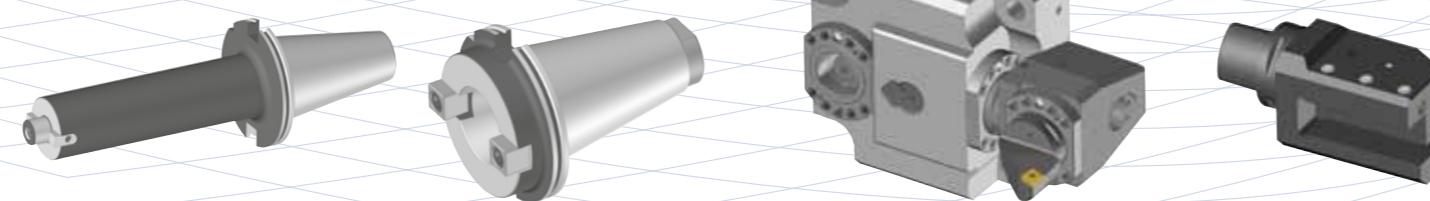
### Drilling Tools, Core Drills and Drill Heads :



### Combination Tools and Lamer Tools :



### Attachments and supports :



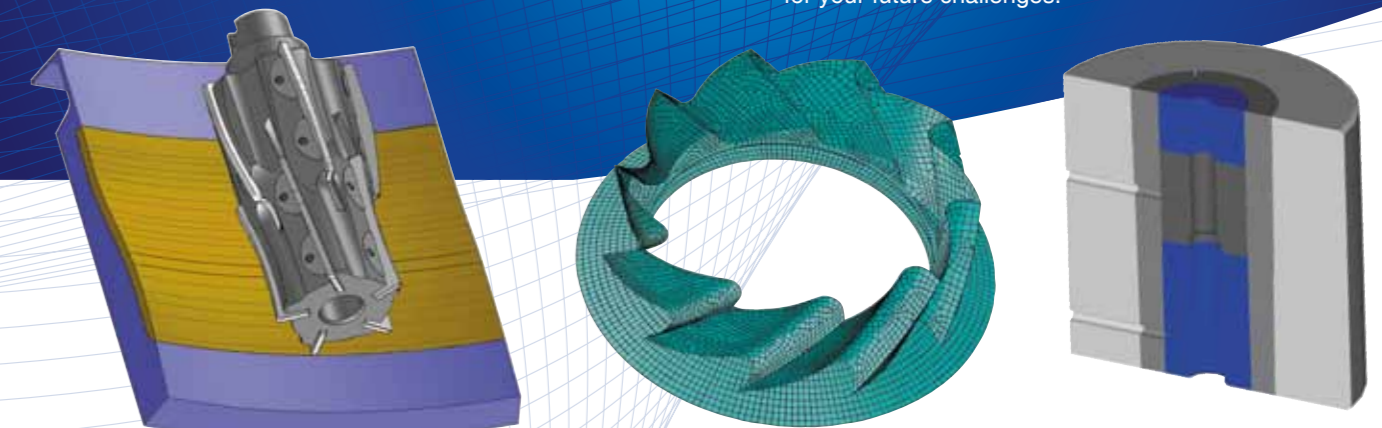
# Studies and development

### Your challenges are our inspiration

The analysis of your needs and the search for solutions that meet your specific requirements are the main ingredients for designing a tool that will generate real productivity gains in your workshops.

Our design office and our R & D department develop new technologies and innovative tools for your applications: machining, wear, striking, etc...

We are at your disposal for any development partnership for your future challenges.



# Tool reconditioning and sharpening

### The cost per metre machined is an essential factor

That's why we know that being able to recondition your various tools is essential. Reconditioning allows you to recover the initial performance of your tools in terms of cutting edge and coating.

Tools «like new»!  
This service contributes effectively to increasing the life of your tools and provides you with significant economic gains.

### Several sharpening solutions :

- Identical Configuration
- Different ranges of shapes and sizes

### For the following types of tools :

- Carbide and ceramic inserts
- PCD and CBN inserts and tools
- HSS and carbide turning tools

### Why sharpening ?

- Reduction of purchasing costs
- Revaluation of used tools
- Vision of sustainable development

